



Apt 37 Shaftesbury Apartments, Liverpool, L3 5SA
£900 PCM

WWW.
cityresidential
.co.uk



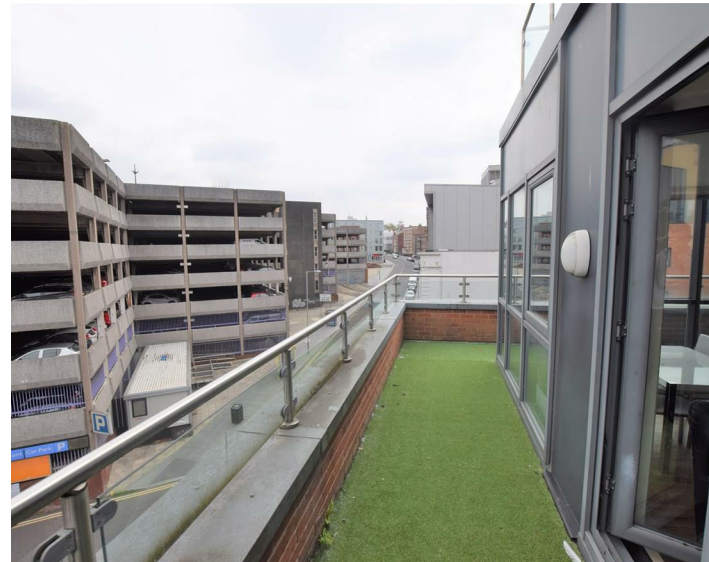
About the Property

Available to Let is this well presented two bedroom duplex apartment in the sought after and highly regarded Shaftesbury Apartments on Mount Pleasant. Finished to a high standard with modern and well appointed bathrooms and kitchen which includes integrated appliances, the apartment briefly comprises; entrance hall, open plan living/kitchen area, two double bedrooms and a main bathroom.

This development is serviced by a lift to all floors. EPC Rating - D. Council Tax Band - B. A deposit amount of £1,038.00 is payable upon moving in. Call us now to arrange a viewing.



Energy Efficiency Rating		Current	Potential
Very energy efficient - lower running costs			
(92 plus) A			
(81-91) B			
(69-80) C			
(55-68) D		68	69
(39-54) E			
(21-38) F			
(1-20) G			
Not energy efficient - higher running costs			
England & Wales	EU Directive 2002/91/EC		



City Residential
 81/87 Victoria Street, The Old Haymarket, Liverpool L1 6DG
 T: 0151 231 6100 F: 0151 231 6105
 E: sales@cityresidential.co.uk



WWW. **cityresidential** .CO.UK